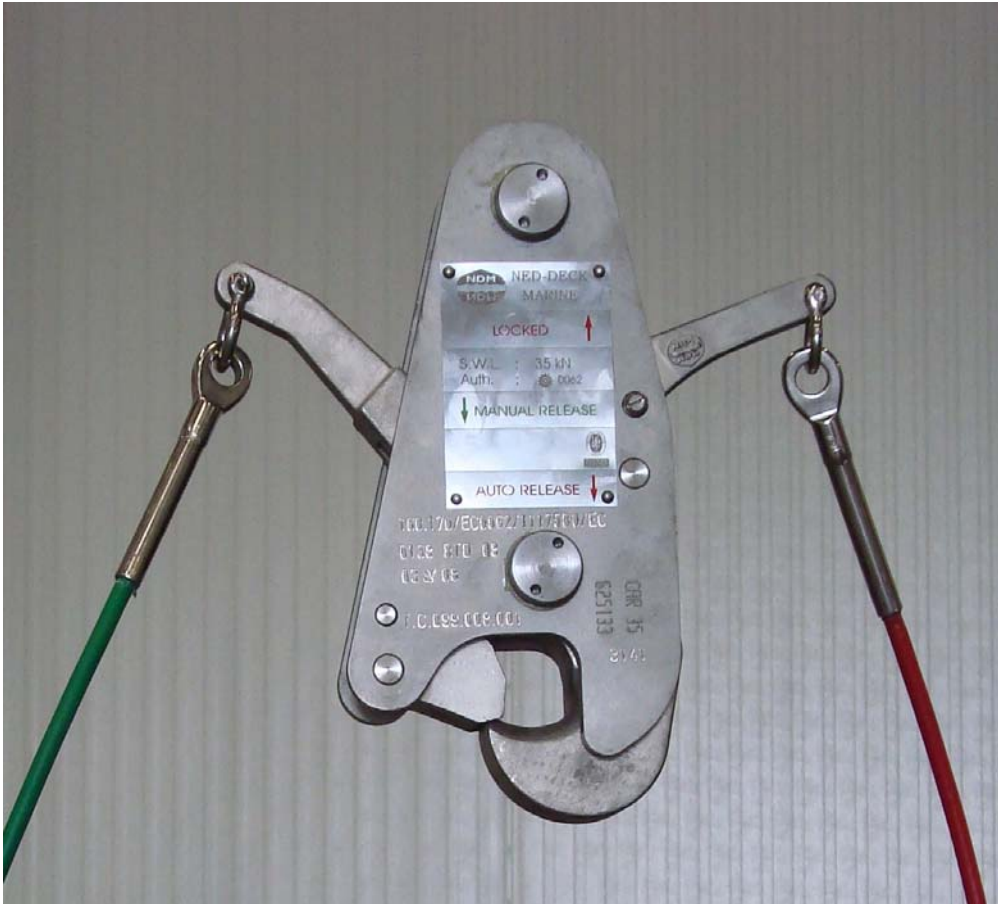


CAR 35 Release Hook.



Supplied by Ned-deck marine

Ambachtsweg 10
3771 MG Barneveld
Holland

Tel. (+31) 342-422105
Fax. (+31) 342 492717

Email: info@ndm.nl

For service: service@ndm.nl

Revision / Date
A / 27-07-2009



Index.

1. CAR 35 RELEASE HOOK.	3
1.1. HOOK PARTICULARS.	3
2. GENERAL INSTRUCTION PLATES.	4
3. FUNCTION	6
3.1. AUTOMATIC (RED HAND GRIP) AND MANUAL (GREEN HAND GRIP) RELEASE.	6
3.2. LOADING THE LINK INTO THE HOOK.	8
4. MAINTENANCE PROGRAM	10



1. CAR 35 Release Hook.

The CAR 35 release hook meets the high SOLAS standards for off-load release hooks, as described in the MSC.81(70) and applicable LSA code, and is dimensioned to suspend davit launched life rafts up to 40 persons and rescue craft with a davit load not exceeding 3.500 kg.

Remember that with this release hook, in both automatic and manual release modes, the actuating lever has to be locked in the automatic release position just before the craft enters the water.

For your information:

- Use non-rotating wire rope.
- Use a painter line where possible.
- Use a shackle Ø19 mm up to Ø27 mm.

During installation of the hook, only the top shaft should be disassembled. Full disassembly of the hook can cause un-repairable damage to the system and dangerous situations which can lead to injuries or death of personnel.

1.1. Hook particulars.

Hook manufacturer:	Ned-Deck Marine.
Hook type:	CAR 35 Automatic release hook. Off-load release type.
Maximum working load:	35 kN
Static proof load:	87,5 kN
Dimensions (without Lanyard):	285 x 260 x 70 mm
Total approx. Weight:	6,1 kg
Auto Release Mode (hook load limit):	0,208 kN
Auto Release Mode (actuating force):	0,157 kN



2. General instruction plates.

Operation instruction plate:

LIFERAFT / RESCUE BOAT
COMBINED AUTOMATIC RELEASE HOOK (CAR 35)
(Type: OFF LOAD RELEASE)
OPERATION INSTRUCTIONS

AUTOMATIC RELEASE
|Red handgrip|

MANUAL RELEASE
|Green handgrip|

Note:
Remember that in both automatic and manual release modes the actuating lever has to be locked in the automatic release position just before survival craft enters the water



NED-DECK MARINE
Survival Systems & Deck Equipment

Ambachtsweg 10
3771 MG Barneveld
The Netherlands

Tel.: (31) 342-422105
Fax: (31) 342-492717
E-mail: info@ndm.nl



Installation instruction plate:



NED-DECK MARINE

Survival Systems & Deck Equipment

LIFERAFT / RESCUE BOAT COMBINED AUTOMATIC RELEASE HOOK (CAR 35)

HOOK INSTALLATION DETAILS

DISASSEMBLY (top shaft only):

- Loosen securing screw (14)
- Loosen nut (07)
- Remove shaft (06)
- Remove distance bush (08)

ASSEMBLY (top shaft only):

- Place bush (08) into spliced eye of corresponding wirerope fall
- Re-insert bush between side plates and re-insert the shaft (06)
- Re-tighten nut (07)
- Place securing screw (14)

NOTE:

- USE NON ROTATING WIRE
- USE PAINTERLINE
- USE SHACKLE 19mm UP TO 27mm

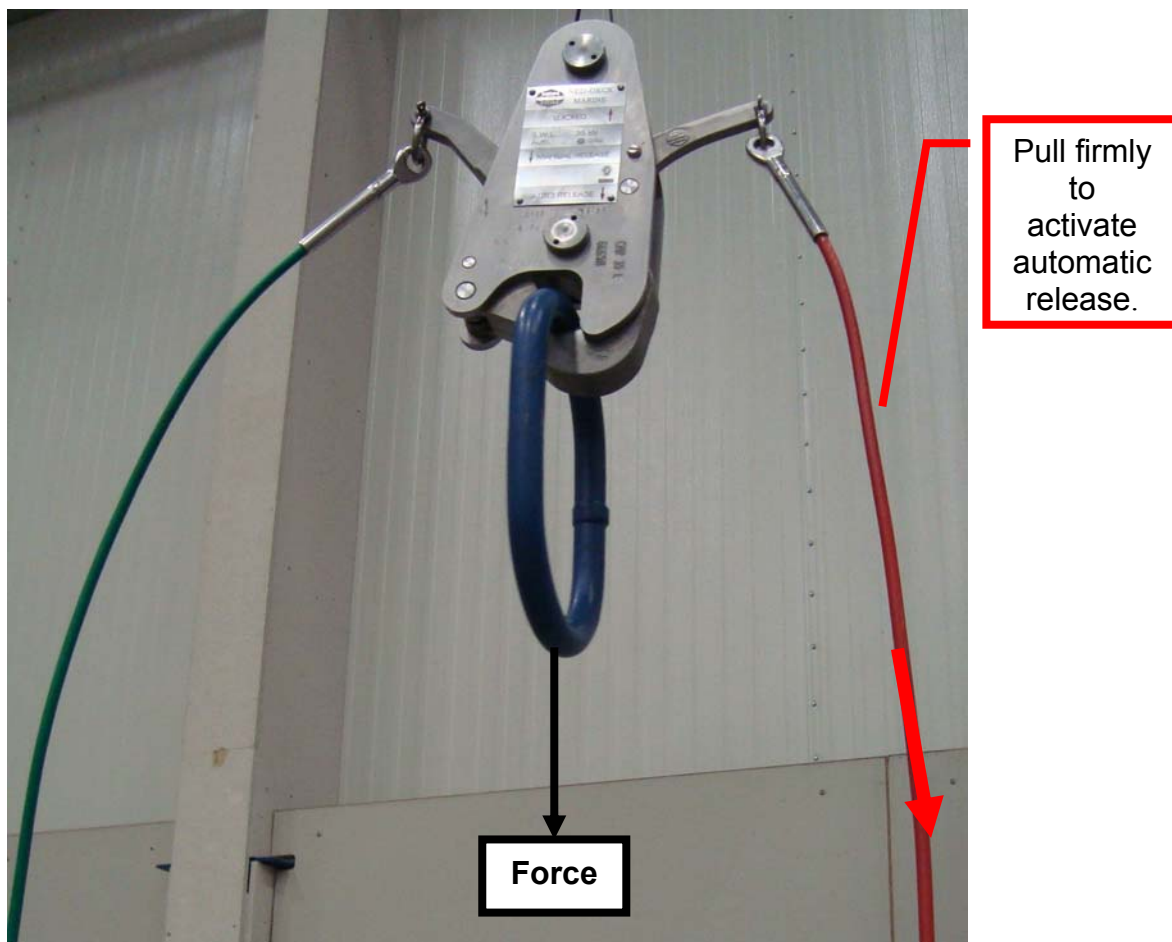
PARTS LIST CAR 35	
ITEM - Component	QTY
01 - Side plate	2
02 - Hook	1
03 - Actuating lever	1
04 - Actuating cord grip (red)	1
05 - Latch	1
06 - Shaft	2
07 - Nut	2
08 - Distance bush	1
09 - Bush	2
10 - Spring	1
11 - Shaft	2
12 - Shaft	1
13 - Bearing bush	2
14 - Securing screw	3
15 - Shaft	1
16 - Shaft & Spring	1
17 - Type plate	1
18 - Actuating lever	1
19 - Shaft	1
20 - Actuating cord grip (green)	1
- Assembly tools (delivered separately)	

3. Function

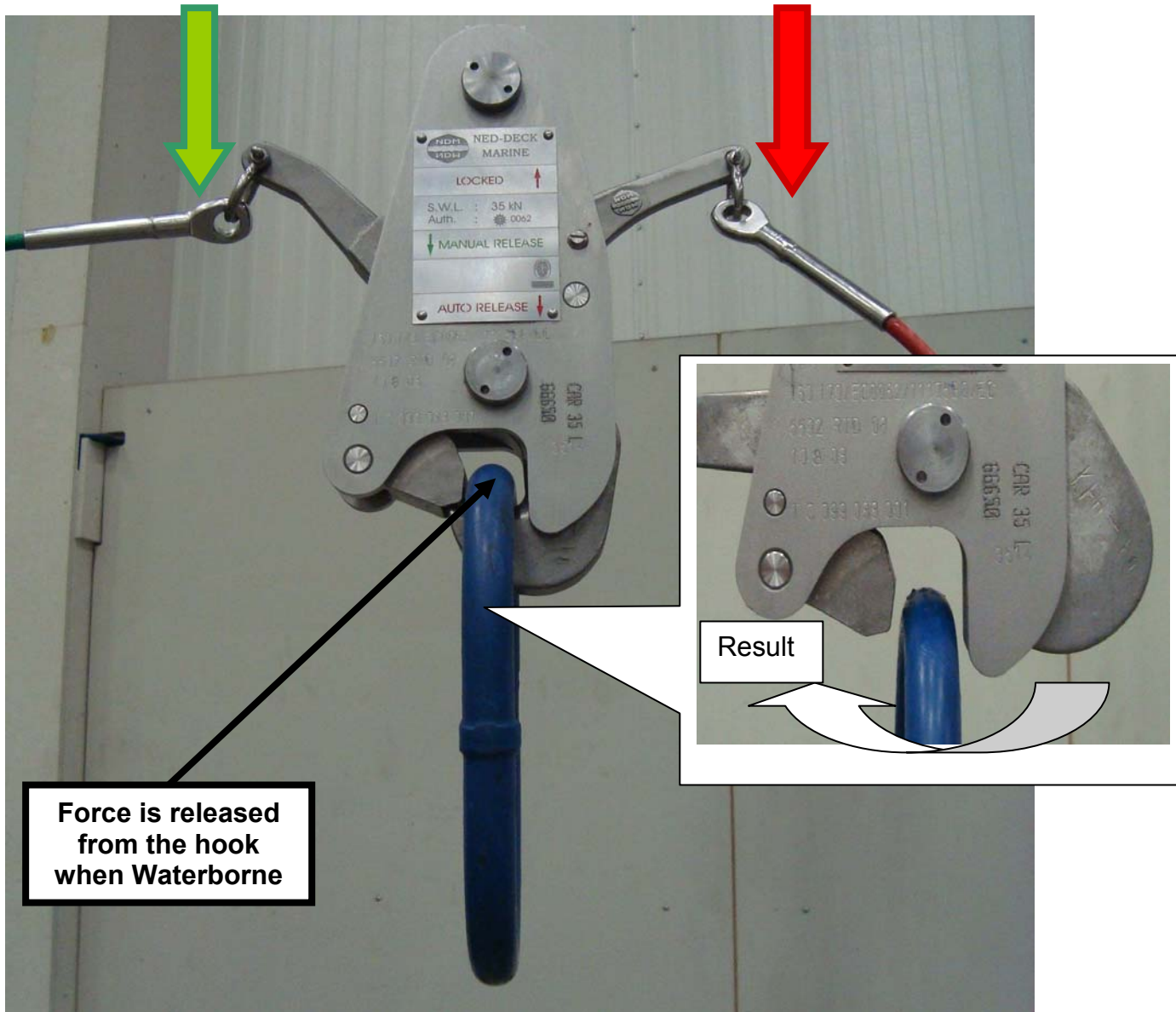
3.1. Automatic (Red hand grip) and manual (Green hand grip) release.

The “Red hand grip” is designed for off-load release. This function is being used during all operations. When we activate the off-load release, the hook shall not open with a load in the hook > 30 kG. When the load is released, the hook shall open (opening between 5 – 30 kG force). Common use is to pull the “Red hand grip” during lowering. When waterborne, the hook will automatically open and the rescue boat can sail away from the vessel.

- When lowering, pull the “Red hand grip” to activate the automatic release as shown in the below figure.



- When waterborne the load is taken away from the hook and it opens automatically. See figure below.



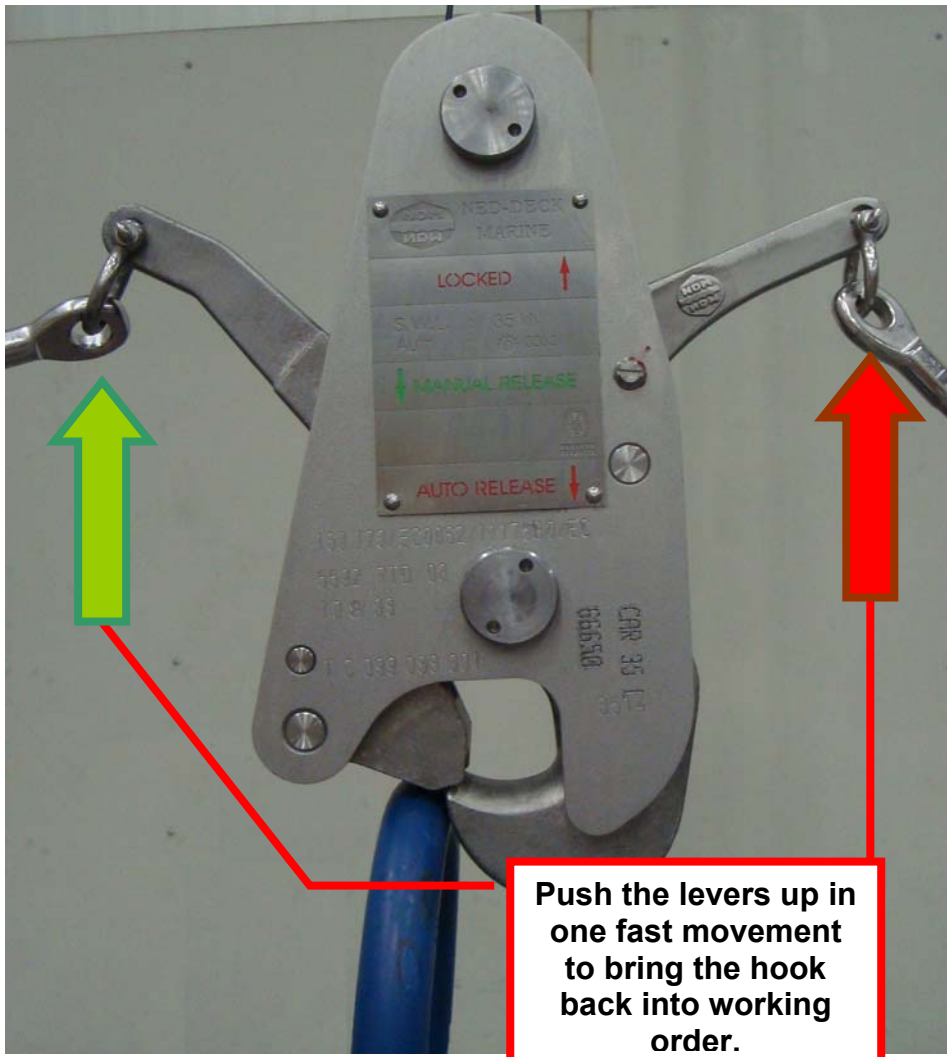
The “Green hand grip” is designed for on-load release till approx 150 kg. For example, when the craft is waterborne, and there is a strong current, the craft can pull on the wire rope and therefore keep the load on the hook system. This means, that under these circumstances the off-load release system will fail. Therefore an extra on-load release (Green hand grip) has been provided. This system can be activated by pulling the “Green hand grip” and releases the hook at all times. Up to a weight of 150 kg, the required pulling force is approx. 60 kg.

3.2. Loading the link into the hook.

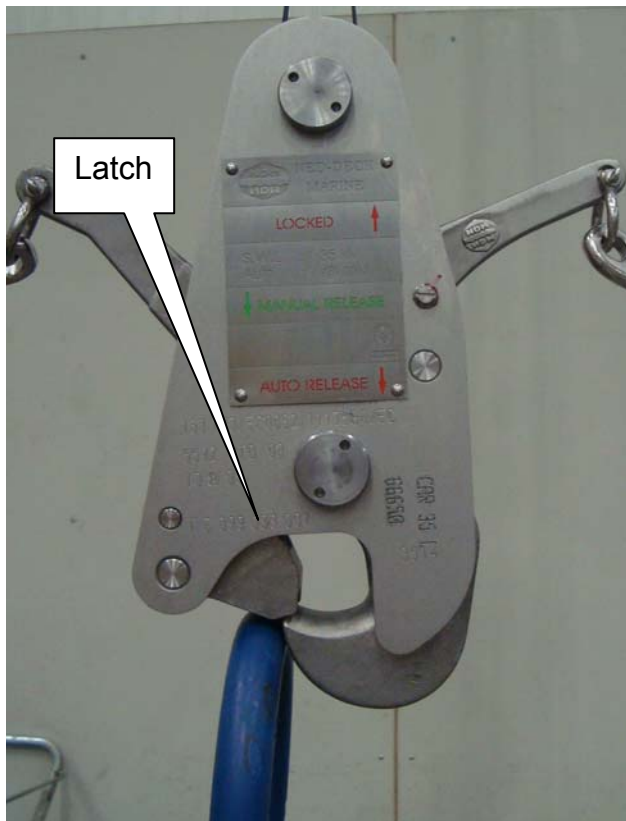
Before we place the link into the hook, we must bring the hook back into working order.

The following procedure must be followed:

- Swing (press firmly) the hook and release lever back into working position. See insert below.



- When ready for loading the hook, press the suspension link of the rescue craft into the hook (as shown below). The latch will rotate up and the suspension link slides in to place and will be locked automatically.



Correct position.

If the link is positioned incorrectly, we can release the hook by pulling firmly on the “Red hand grip”. Now we can reposition the hook as described above and place the link correctly.

h the
ension
ough the
firmly!

Result



4. Maintenance program

According to the latest IMO/SOLAS rules and regulations (MSC 1206) release hook mechanisms require annual services by the manufacturer or an authorized service station.

In compliance with before mentioned regulations and for our customer's convenience, Ned-Deck Marine has implemented the unique '**CAR 35 Replacement Program**':

The CAR 35 combined automatic release hook, used onboard your vessel, will require annual service by the manufacturer, Ned-Deck Marine (NDM). To save time and labour of a service engineer visit, NDM will send you a reconditioned, updated and newly certified CAR 35 hook by courier to your vessel or an agent/port of your choice.

Upon arrival you can swap your 'old' hook with the newly certified CAR35 hook sent by NDM.

At this point you have installed a newly certified hook and are in compliance with Class regulations.

You are only required to return the currently used (old) hook to the NDM office in The Netherlands.

This will save you lot's of time and money! Prices for the newly certified and reconditioned CAR 35 hooks can be obtained from our service department

Should you wish to enter this '**CAR 35 Replacement Program**', please inform us your IMO number, vessel name, delivery address and contact person, invoice address & VAT details

