



YILMAZ DENİZCİLİK

NAKLİYAT VE GEMİ SAN. TİC. LTD. ŞTİ



QUICK ACTING HOOK (TYPE:YDGS 13)

A) GENERAL INFORMATION

B) TECHNICAL SPECIFICATION

C) OPERATION GUIDE

1) MOUNTING

2) SETTING HOOK

3) RELEASING

D) MAINTENANCE & INSPECTION

E) DRAWING



YILMAZ DENİZCİLİK

NAKLİYAT VE GEMİ SAN. TİC. LTD. ŞTİ



QUICK ACTING HOOK (TYPE:YDGS 13)

A) GENERAL INFORMATION

Quick Acting Hook YDGS 13 manufactured according to latest regulation and tested LSA code.

Quick acting hook **YDGS 13** is made of stainless steel 316 L.

Mounting, setting and usage of quick acting hook **YDGS 13** is so simple/easy and extremely safe. Mounting, setting and usage done by only one person and does not need any equipment while setting and using the hook.

Quick acting hook **YDGS 13** is used for rescue boat and designed to release both on load and off load.

All components of the **YDGS 13** are selected for long life under arduous marine conditions.

Maintenance and inspection of the **YDGS 13** is simple, too and mentioned in this guide.



YILMAZ DENİZCİLİK

NAKLİYAT VE GEMİ SAN. TİC. LTD. ŞTİ



QUICK ACTING HOOK (TYPE:YDGS 13)

B) TECHNICAL SPECIFICATION

MODEL	: RESCUE BOAT QUICK ACTING HOOK ON LOAD / OFF LOAD RELEASE
TYPE	: YDGS 13
MAXIMUM WORKING LOAD	: 15 kN
STATIC PROOF LOAD	: 37,5 kN
DIMENSIONS	: 242x112x40 mm.
WEIGHT	: 4,8 kg
ACTUATING FORCE	: 0,22 kN



YILMAZ DENİZCİLİK

NAKLİYAT VE GEMİ SAN. TİC. LTD. ŞTİ



QUICK ACTING HOOK (TYPE:YDGS 13)

C) OPERATION GUIDE

1) MOUNTING

Mounting of the **YDGS 13** is so easy and carried out by just top shaft.

Loose nut **(8)**. Remove the top shaft**(6)** and distance bush.Place bush**(5)** into spliced eye of corresponding wire rope fall.Re-insert bush between side plates and re-insert the shaft**(6)**. Complete the mounting after te-tighten the nut**(8)**

The most important thing during the mounting of hook is, not to loose nut except mentioned nut**(8)**.System will be damaged if the side plates removed and accidents will occur due to system failure.

The other important thing during the mounting is steel wire rope.Take care of the steel wire rope is non-rotating wire, rustproof and not been lubricated if it is coated galvanize.



YILMAZ DENİZCİLİK

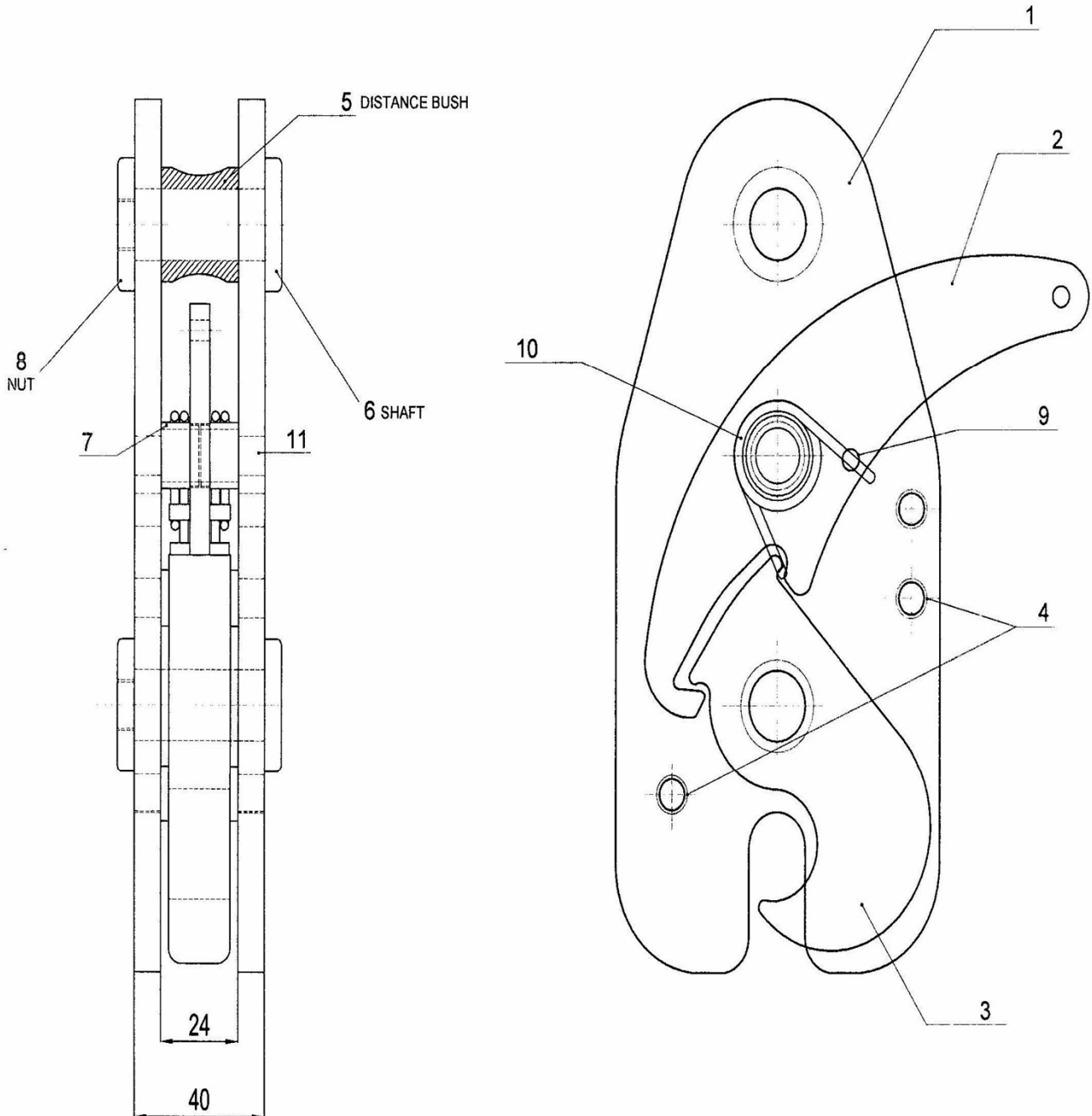
NAKLİYAT VE GEMİ SAN. TİC. LTD. ŞTİ



QUICK ACTING HOOK (TYPE:YDGS 13)

C) OPERATION GUIDE

1) MOUNTING





YILMAZ DENİZCİLİK

NAKLİYAT VE GEMİ SAN. TİC. LTD. ŞTİ



QUICK ACTING HOOK (TYPE:YDGS 13)

C) OPERATION GUIDE

2) SETTING HOOK

Shackle at the end of the rescue boat's sling (suspension link) positioned to the released hook. Hook should be pushed at the direction shown as below. Setting spring mechanism is achieved by pushing the hook enough. Well then, the hook is ready to operation.

Before the connection of suspension link to the hook, ensure that thickness of the suspension link is between 15mm and 18mm.

Also be careful when setting the quick acting hook mechanism, fingers/hand should not be between the main body and the hook, otherwise injuries may occur.



YILMAZ DENİZCİLİK

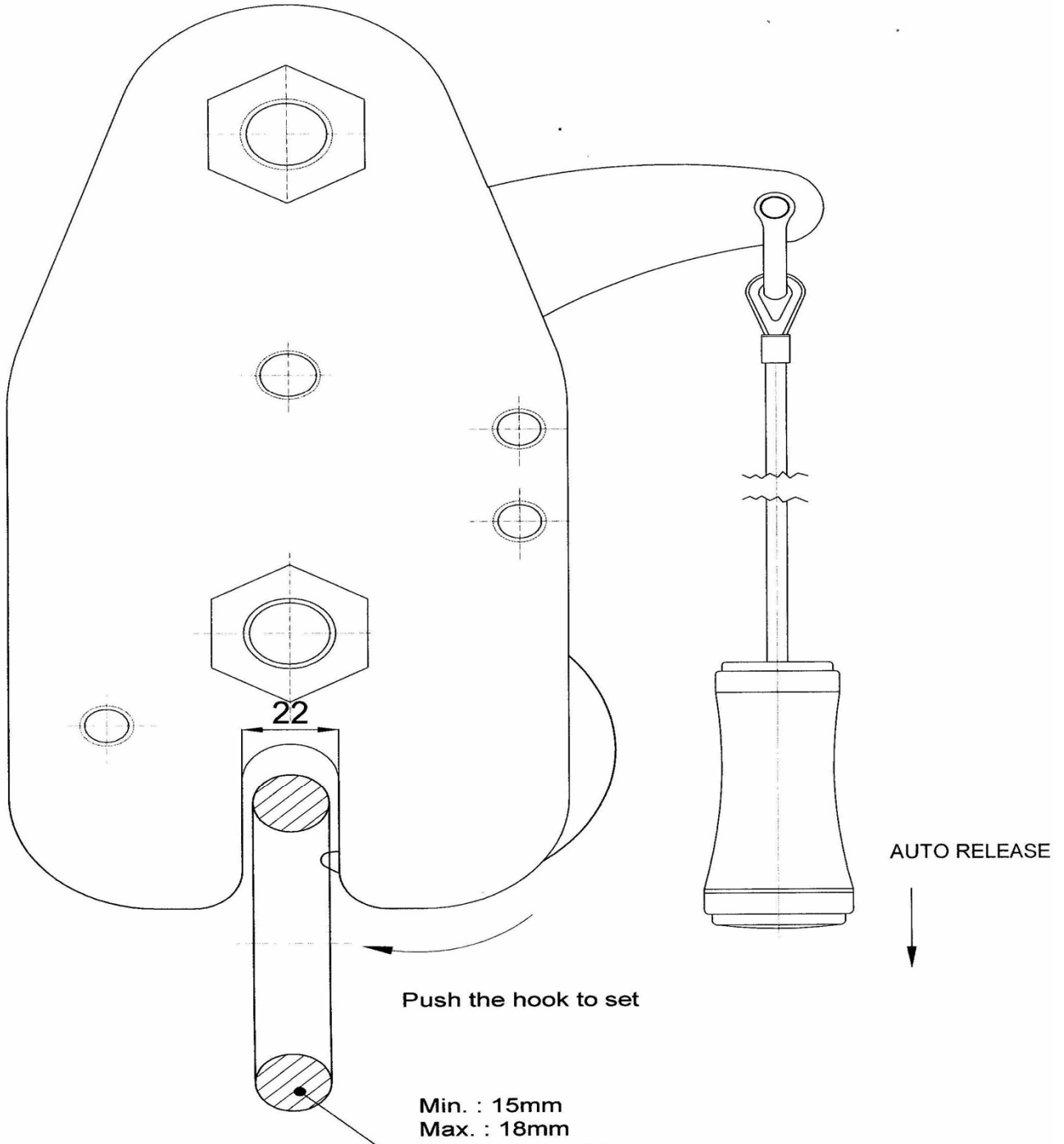
NAKLİYAT VE GEMİ SAN. TİC. LTD. ŞTİ



QUICK ACTING HOOK (TYPE:YDGS 13)

C) OPERATION GUIDE

2) SETTING HOOK





YILMAZ DENİZCİLİK

NAKLİYAT VE GEMİ SAN. TİC. LTD. ŞTİ



QUICK ACTING HOOK (TYPE:YDGS 13)

C) OPERATION GUIDE

3) RELEASING

OFF LOAD RELEASE

Quick acting hook should be completely free to off load release operation.

Lower the rescue boat via davit unless the force removed from quick acting hook. When the rescue boat is ready to be released, rapidly pull down the actuating lever. In this way, setted up spring will be free and this lets the hook to be opened.

Suspension link will fall down as a result of releasing the hook although there were no load on the quick acting hook, so that during the operation crew should be careful to prevent accidents.

Motion of the sea should be taken into consideration while the lowering operation of rescue boat. To prevent any accident due to falling down of the rescue boat, everyone on the rescue boat should sit down.



YILMAZ DENİZCİLİK

NAKLİYAT VE GEMİ SAN. TİC. LTD. ŞTİ



QUICK ACTING HOOK (TYPE:YDGS 13)

C) OPERATION GUIDE

3) RELEASING

ON LOAD RELEASE

Crew on the boat should be careful during the on load release operation!

On load release operation should not done to prevent damaging the rescue boat and injuries unless it is compulsory.If on load release will carry out then ensure that the rescue boat is closest position to the sea.

When the rescue boat is ready to be released, rapidly pull down the actuating lever.

In this way, setted up spring will be free and this lets the hook to be opened.

Suspension link will fall down as a result of releasing the hook, so that during the operation crew should be careful to prevent accidents. Meanwhile, to prevent any accident due to falling down of the rescue boat, everyone on the rescue boat should sit down.Also, the operator should warn the crew before releasing the quick acting hook.



YILMAZ DENİZCİLİK

NAKLİYAT VE GEMİ SAN. TİC. LTD. ŞTİ



QUICK ACTING HOOK (TYPE:YDGS 13)

D) MAINTENANCE & INSPECTION

Weekly Inspection

- ~ Inspection of setting and releasing the quick acting hook
- ~ Cleaning any dirt on the hook especially moving parts

Monthly Inspection

- ~ Inspection of tightness of nuts on quick acting hook
- ~ Inspection of steel wire rope's and all connections

Annual Inspection

- ~ Annual inspection of quick acting hook by "Yılmaz Denizcilik" as manufacturer

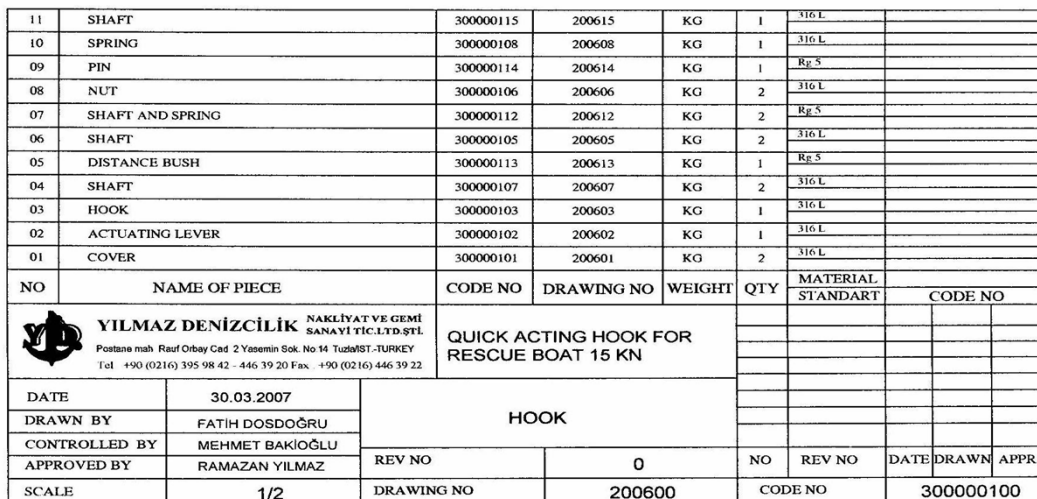
Service should be desired from Yılmaz Denizcilik in any case of functional problems of quick acting hook **YDGS 13**. Ship owner is responsible for the service of any other company except from Yılmaz Denizcilik.

It is recommended that not to remove any parts of the quick acting hook **YDGS 13** by unauthorized personnel except Yılmaz Denizcilik's own personnel.

Any mistake will cause injuries or death!



NOTE : (SWL) SAFETY WEIGHT OF LOAD IS 15 KN FOR HOOK





YILMAZ DENİZCİLİK

NAKLİYAT VE GEMİ SAN. TİC. LTD. ŞTİ



QUICK ACTING HOOK (TYPE:YDGS 13)

E) DRAWING

TYPE : YDGS 13

NOTE : (SWL) SAFETY WEIGHT OF LOAD IS 15 KN FOR HOOK

